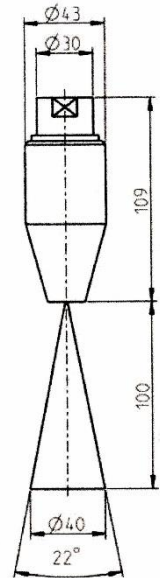


MONRO-JET® Orbital- Rotordüse F4 – “Das Original”

Monro-Jet® F4 Orbital - Rotordüse

- Anschlussgewinde: innen (siehe Tabelle)
- Betriebsdruck max.: 500 bar
- Mediums Temperatur max.: 100°
- Spritzwinkel: 22°
- Gehäuse: Edelstahl
- Rotorkörper: für höhere Zuverlässigkeit
- Bremsrolle: Hochleistungskunststoff
- Düsenkörper: Hartmetall
- Düsengröße: 0,60 -2,8 mm (siehe Tabelle)
- Rotorsitz: Hartmetall
- Durchsatzmenge: siehe Prospekt

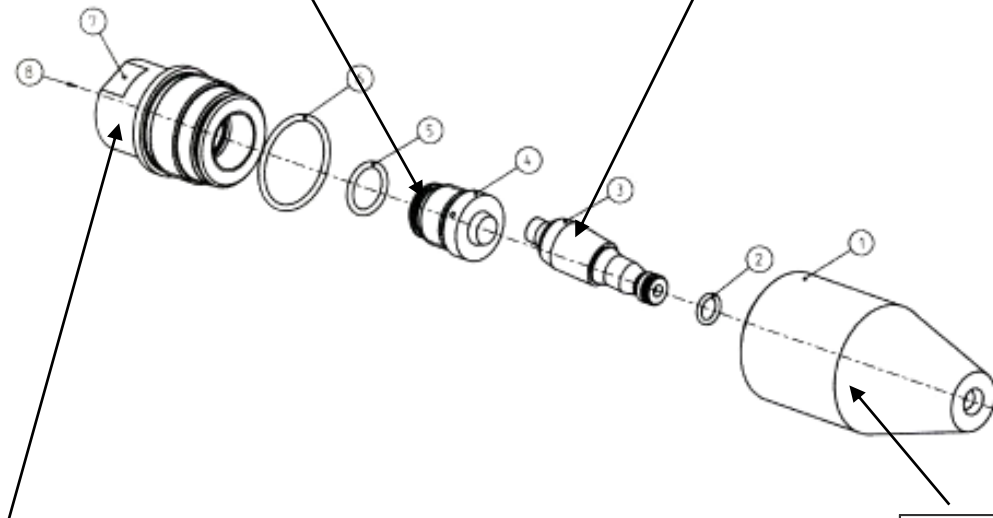
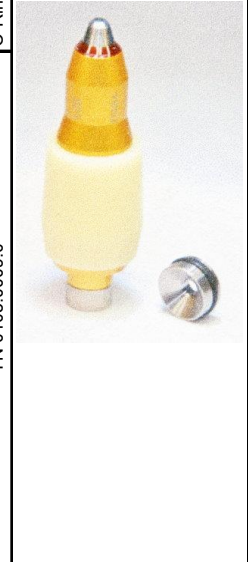


Programmübersicht Monro-Jet® Orbital-Rotordüse -F4 "DAS ORIGINAL"					Düsenfaktor		0,865								
Monro-Jet® F4 Teile Nr.: kompl.					System-Bauteile			Betriebsdruck [bar]							
					Rotor	Treibrohr		50	100	200	300	400	500		
1/4" BSP	1/2" BSP	3/8" BSP	1/2" NPT	3/8" NPT	øb	øD	Geschwindigkeitszahl								
6150.0...	6150.1...	6150.2...	6150.6...	6150.A...		Anzahl der Bohrungen	0,998	0,994	0,990	0,986	0,983	0,987	Volumendurchsatz [l/min]		
					[mm]	[mm]									
...060.0	...060.0	...060.0	...060.0	...060.0	0,60	0,60	1,4	2,0	2,9	3,5	4,0	4,5			
...065.0	...065.0	...065.0	...065.0	...065.0	0,65	0,65	1,7	2,4	3,4	4,1	4,7	5,3			
...070.0	...070.0	...070.0	...070.0	...070.0	0,70	0,70	2,0	2,8	3,9	4,7	5,5	6,1			
...075.0	...075.0	...075.0	...075.0	...075.0	0,75	0,70	2,2	3,2	4,5	5,4	6,3	7,0			
...080.0	...080.0	...080.0	...080.0	...080.0	0,80	0,70	2,6	3,6	5,1	6,2	7,1	8,0			
...085.0	...085.0	...085.0	...085.0	...085.0	0,85	0,70	2,9	4,1	5,7	7,0	8,0	9,0			
...090.0	...090.0	...090.0	...090.0	...090.0	0,90	0,70	3,2	4,6	6,4	7,8	9,0	10,1			
...095.0	...095.0	...095.0	...095.0	...095.0	0,95	1,00	3,6	5,1	7,2	8,7	10,1	11,3			
...100.0	...100.0	...100.0	...100.0	...100.0	1,00	1,00	4,0	5,6	7,9	9,7	11,1	12,5			
...105.0	...105.0	...105.0	...105.0	...105.0	1,05	1,20	4,4	6,2	8,7	10,7	12,3	13,8			
...110.0	...110.0	...110.0	...110.0	...110.0	1,10	1,40	4,8	6,8	9,6	11,7	13,5	15,1			
...115.0	...115.0	...115.0	...115.0	...115.0	1,15	1,40	5,3	7,4	10,5	12,8	14,7	16,5			
...120.0	...120.0	...120.0	...120.0	...120.0	1,20	1,80	5,8	8,1	11,4	13,9	16,0	18,0			
...125.0	...125.0	...125.0	...125.0	...125.0	1,25	1,80	6,2	8,8	12,4	15,1	17,4	19,5			
...130.0	...130.0	...130.0	...130.0	...130.0	1,30	2,40	6,8	9,5	13,4	16,4	18,8	21,1			
...135.0	...135.0	...135.0	...135.0	...135.0	1,35	2,40	7,3	10,3	14,5	17,6	20,3	22,8			
...140.0	...140.0	...140.0	...140.0	...140.0	1,40	2,40	7,8	11,0	15,5	19,0	21,8	24,5			
...145.0	...145.0	...145.0	...145.0	...145.0	1,45	2,60	8,4	11,8	16,7	20,3	23,4	26,3			
...150.0	...150.0	...150.0	...150.0	...150.0	1,50	2,60	9,0	12,7	17,8	21,8	25,1	28,1			
...155.0	...155.0	...155.0	...155.0	...155.0	1,55	2,80	9,6	13,5	19,1	23,2	26,8	30,0			
...160.0	...160.0	...160.0	...160.0	...160.0	1,60	2,80	10,2	14,4	20,3	24,8	28,5	32,0			
...165.0	...165.0	...165.0	...165.0	...165.0	1,65	3,00	10,9	15,3	21,6	26,3	30,3	34,0			
...170.0	...170.0	...170.0	...170.0	...170.0	1,70	3,00	11,6	16,3	22,9	28,0	32,2	36,1			
...175.0	...175.0	...175.0	...175.0	...175.0	1,75	3,00	12,2	17,2	24,3	29,6	34,1	38,3			
...180.0	...180.0	...180.0	...180.0	...180.0	1,80	3,20	13,0	18,2	25,7	31,4	36,1	40,5			
...185.0	...185.0	...185.0	...185.0	...185.0	1,85	3,20	13,7	19,3	27,1	33,1	38,1	42,8			
...190.0	...190.0	...190.0	...190.0	...190.0	1,90	3,20	14,4	20,3	28,6	34,9	40,2	45,1			
...195.0	...195.0	...195.0	...195.0	...195.0	1,95	3,20	15,2	21,4	30,2	36,8	42,4	47,5			
...200.0	...200.0	...200.0	...200.0	...200.0	2,00	3,00	16,0	22,5	31,7	38,7	44,6	50,0			
...210.0	...210.0	...210.0	...210.0	...210.0	2,10	3,00	17,6	24,8	35,0	42,7	49,1	55,1			
...220.0	...220.0	...220.0	...220.0	...220.0	2,20	3,20	19,4	27,3	38,4	46,8	53,9	60,5			
...230.0	...230.0	...230.0	...230.0	...230.0	2,30	3,20	21,2	29,8	42,0	51,2	58,9	66,1			
...240.0	...240.0	...240.0	...240.0	...240.0	2,40	3,20	23,0	32,4	45,7	55,7	64,2	72,0			
...250.0	...250.0	...250.0	...250.0	...250.0	2,50	3,20	25,0	35,2	49,6	60,5	69,6	78,2			
...260.0	...260.0	...260.0	...260.0	...260.0	2,60	3,50	27,0	38,1	53,6	65,4	75,3	84,5			
...280.0	...280.0	...280.0	...280.0	...280.0	2,80	3,50	31,3	44,2	62,2	75,9	87,3	98,0			

Rückstoßkraft: >150N | >250 N

Treibrohr mit O-Ring 14x2			Anzahl Bohrungen	O-Ring 14x2			
Teile Nummer	mm	Ø					
8905.3060.0	0,60	zwei	TN 0105.0013.0				
8905.3065.0	0,65						
8905.3070.0	0,70						
8905.3075.0	0,75						
8905.3080.0	0,80						
8905.3100.0	1,00						
8905.3120.0	1,20						
8905.3140.0	1,40						
8905.3180.0	1,80						
8905.3240.0	2,40						
8905.3260.0	2,60						
8905.3280.0	2,80						
8905.3300.0	3,00						
8905.3320.0	3,20						
8905.3300.4	3,00				vier		
8905.3320.4	3,20						
8905.3350.4	3,50						

Reparatursatz Rotor				O-Ring 7,1x1,6
Teile Nummer	mm	Teile Nummer	mm	
8005.4060.0	0,60	8005.4155.0	1,55	
8005.4065.0	0,65	8005.4160.0	1,60	
8005.4070.0	0,70	8005.4165.0	1,65	
8005.4075.0	0,75	8005.4170.0	1,70	
8005.4080.0	0,80	8005.4175.0	1,75	
8005.4085.0	0,85	8005.4180.0	1,80	
8005.4090.0	0,90	8005.4185.0	1,85	
8005.4095.0	0,95	8005.4190.0	1,90	
8005.4100.0	1,00	8005.4195.0	1,95	
8005.4105.0	1,05	8005.4200.0	2,00	
8005.4110.0	1,10	8005.4205.0	2,05	
8005.4115.0	1,15	8005.4210.0	2,10	
8005.4120.0	1,20	8005.4215.0	2,15	
8005.4125.0	1,25	8005.4220.0	2,20	
8005.4130.0	1,30	8005.4230.0	2,30	
8005.4135.0	1,35	8005.4250.0	2,50	
8005.4140.0	1,40	8005.4260.0	2,60	
8005.4145.0	1,45	8005.4280.0	2,80	
8005.4150.0	1,50			



Einlassdeckel mit O-Ring		O-Ring ø28x2
Benennung	Teile Nummer	TN
1/4"	8905.3007.0	0105.0014.0
1/2" BSP	8905.3008.0	
3/8" BSP	8905.3009.0	
1/2" NPT	8905.3021.0	
3/8" NPT	8905.3022.0	
9/16"-18UNF-LH	8905.3002.0	
M14x1,5 LH	8905.3001.0	
Y-Dichtung (HP-Übergangsstück)	0150.0001.0	

Montagewerkzeug
Teile Nummer
0010.4008.0

	O-Ring 28x2
Düsenkörper	O-Ring 28x2
Teile Nummer	
8905.3014.0	0105.0014.0